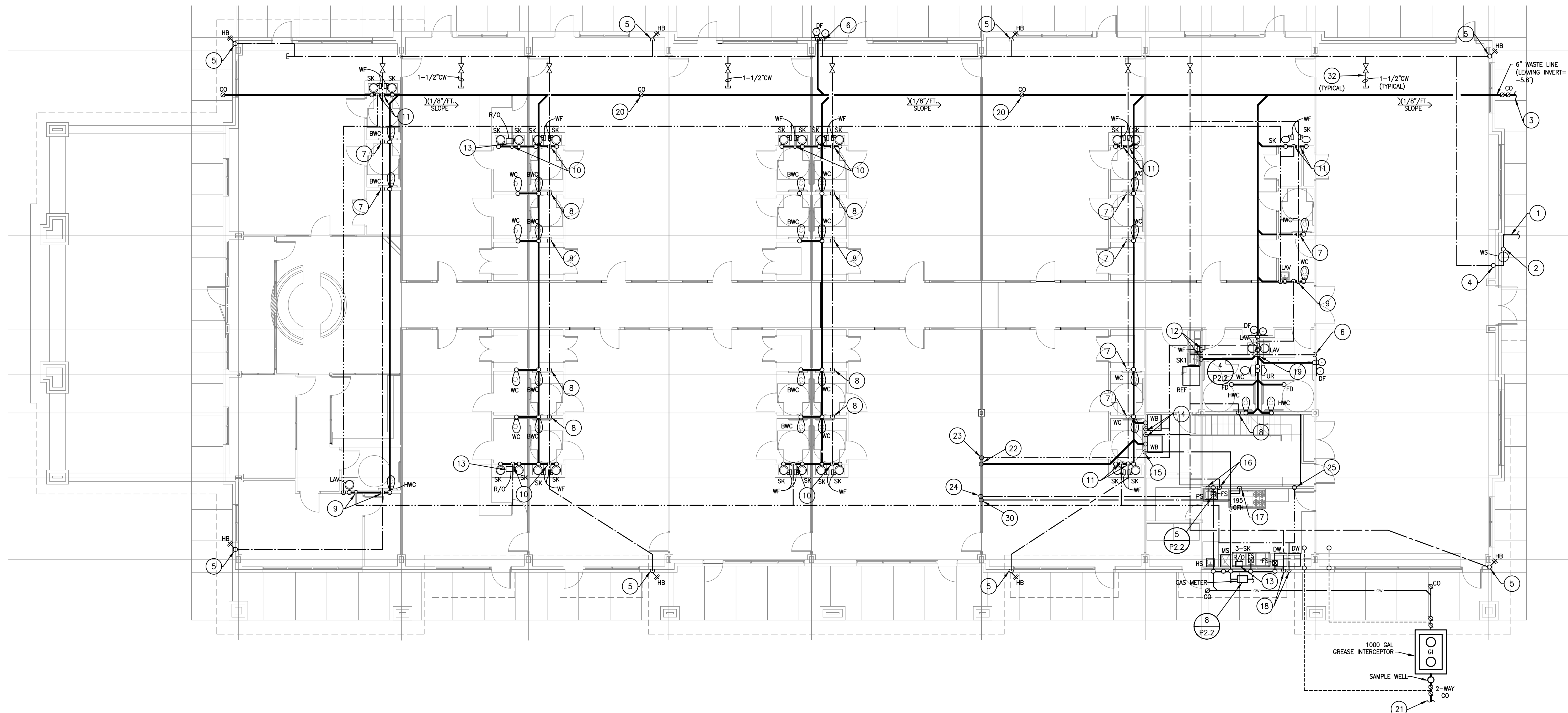
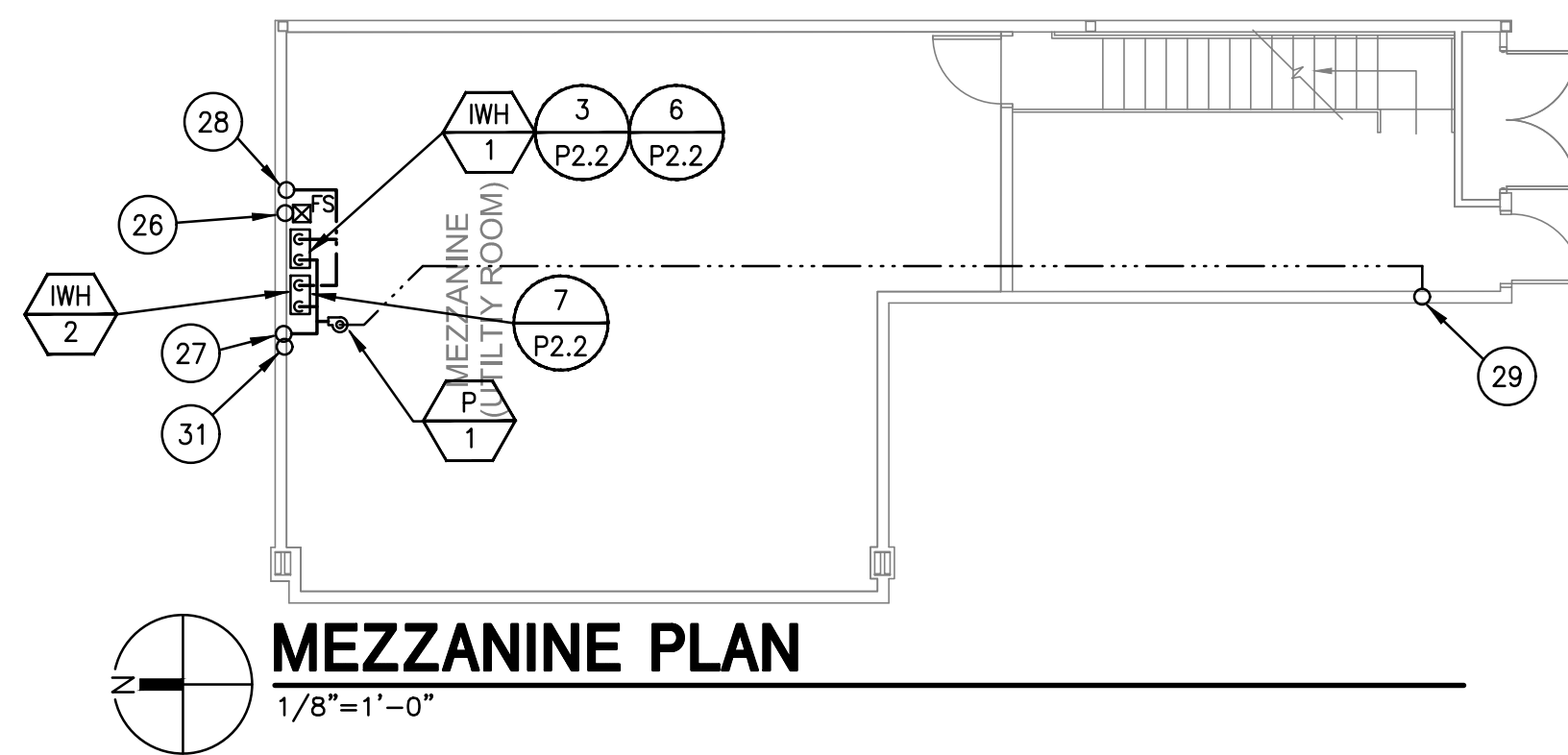


GENERAL NOTES

- CONTRACTOR SHALL FIELD VERIFY EXISTING SEWER UTILITY CONNECTION SIZE, LOCATION, SLOPE, DIRECTION OF FLOW AND INVERT PRIOR TO BEGINNING CONSTRUCTION. CONTRACTOR SHALL IMMEDIATELY NOTIFY ENGINEER OF ANY DISCREPANCIES BETWEEN THE PLANS AND ACTUAL FIELD CONDITIONS.
- CONTRACTOR SHALL MAINTAIN ALL WARRANTIES ASSOCIATED WITH EXISTING ROOF FOR ALL ROOF PENETRATIONS. PROVIDE NEW ROOF PIPE PORTALS AS NECESSARY. COORDINATE WITH ARCHITECTURAL DRAWINGS.
- CONTRACTOR SHALL SAW OUT EXISTING CONCRETE FLOOR SLAB FOR INSTALLATION OF NEW WASTE AND VENT PIPING BELOW FLOOR. PATCH AND SEAL ALL FLOOR OPENINGS TO MATCH EXISTING FLOOR IN ACCORDANCE WITH ARCHITECT'S REQUIREMENTS.
- UNDERGROUND NON-METALLIC SANITARY DRAINAGE PIPING LARGER THAN 2 INCHES IN DIAMETER SHALL BE INSTALLED WITH INSULATED COPPER TRACER WIRE OR OTHER APPROVED CONDUCTOR LOCATED ADJACENT TO THE PIPING. THE TRACER WIRE SHALL TERMINATE ABOVE GROUND AT EACH END OF THE NON-METALLIC PIPING. THE TRACER WIRE SIZE SHALL BE NOT LESS THAN 18 AWG AND THE INSULATION TYPE SHALL BE SUITABLE FOR DIRECT BURIAL.
- ALL PIPE, PIPE FITTINGS, TRAPS, FIXTURES, MATERIAL AND DEVICES USED IN THIS PLUMBING SYSTEM SHALL BE LISTED OR LABELED BY A LISTING AGENCY. EACH LENGTH OF PIPE AND EACH PIPE FITTING, TRAP, FIXTURE, MATERIAL AND DEVICES USED IN THIS PLUMBING SYSTEM SHALL HAVE CAST, STAMPED, OR INDELIBLY MARKED ON IT THE MAKERS MARK OR NAME. SUCH MARKING IS REQUIRED BY THE APPROVED STANDARD THAT APPLIES.
- ALL INDIRECT WASTES, CONDENSATE AND RELIEF VALVE DRAINS SHALL HAVE CODE APPROVED AIR GAPS.
- EACH VENT SHALL TERMINATE NOT LESS THAN 10 FT FROM OR 3 FT ABOVE ANY WINDOW, DOOR OPENING, AIR INTAKE OF VENT SHAFT, NOR LESS THAN 3 FT IN EVERY DIRECTION FROM ANY LOT LINE (ALLEY & STREET ACCEPTED).
- ALL FLOOR CLEAN OUTS, FLOOR SINKS AND FLOOR DRAINS TO SET FLUSH WITH FINISHED FLOOR.
- PROVIDE CHROME PLATED P-TRAP, TAILPIPE AND ESCUTCHEON AT EACH REQUIRED EQUIPMENT DIRECT WASTE CONNECTION.
- ALL FLOOR DRAINS SHALL HAVE TRAP PRIMERS PROVIDED OR AS DIRECTED BY THE LOCAL JURISDICTION.
- CONTRACTOR SHALL FIELD VERIFY EXISTING WATER UTILITY CONNECTION SIZE AND LOCATION PRIOR TO BEGINNING CONSTRUCTION. CONTRACTOR SHALL IMMEDIATELY NOTIFY ENGINEER OF ANY DISCREPANCIES BETWEEN THE PLANS AND ACTUAL FIELD CONDITIONS.
- PLUMBING CONTRACTOR TO COORDINATE EXACT STREET WATER PRESSURE AND NOTIFY ENGINEER OF ANY DISCREPANCIES. CONTRACTOR SHALL PROVIDE A PRESSURE REDUCING VALVE (PRV) IF STREET WATER PRESSURE EXCEEDS 80 PSI. PRV SHALL BE INSTALLED ON BUILDING SIDE OF WATER METER AND SET TO 80 PSI.
- CONTRACTOR SHALL MAINTAIN ALL WARRANTIES ASSOCIATED WITH ROOF FOR ALL ROOF PENETRATIONS. PROVIDE NEW ROOF PIPE PORTALS AS NECESSARY. COORDINATE WITH ARCHITECTURAL DRAWINGS.
- INSULATE ALL WATER PIPING ABOVE CEILING TO PREVENT FREEZING.
- MAKE SHUTOFF VALVES ACCESSIBLE NEAR THE EQUIPMENT THEY SERVE.
- ALL LAVATORIES SHALL BE PROVIDED WITH A THERMO-STATIC MIXING VALVE TO SUPPLY TEMPERED HW, MAX. 110 DEG. F.

KEYED NOTES

- 2" DOMESTIC WATER LINE TO CONNECT TO SITE UTILITY LINE FROM NEW 2" WATER METER. REFER TO CIVIL DRAWINGS FOR CONTINUATION.
- ROUTE 2" WATER LINE UP TO WATER SOFTENER, PROVIDE SHUT OFF VALVE IN RISER 18" A.F.F.
- 6" WASTE LINE, REFER TO CIVIL DRAWINGS FOR CONTINUATION.
- ROUTE 2" WATER LINE UP TO BELOW ROOF STRUCTURE.
- ROUTE 3/4" CW LINE DOWN IN WALL. ROUTE 3/4" CW LINE TO HOSE BIBB.
- ROUTE 1/2" CW LINE DOWN IN WALL. ROUTE 1/2" CW LINE TO DRINKING FOUNTAIN.
- ROUTE 3/4" CW LINE DOWN IN WALL. ROUTE 3/4" CW LINE TO WATER CLOSET.
- ROUTE 1" CW LINE DOWN IN WALL. ROUTE 3/4" CW LINE TO EACH WATER CLOSET.
- ROUTE 3/4" AND 1/2" HW LINES DOWN IN WALL. ROUTE 1/2" CW/HW LINE TO LAV, AND 3/4" CW LINE TO WC. HWR CONNECTION TO BE WITHIN 6" OF LAVATORY SUPPLY PER SECTION C404.5.1 OF THE 2015 IECC.
- ROUTE 1" CW/HW LINES DOWN IN WALL. ROUTE 1/2" CW/HW LINE TO EACH SK. INSTALL WATER FILTER PER MANUFACTURERS REQUIREMENTS AND CONNECT TO BUBBLER PER ARCHITECTS DIRECTION.
- ROUTE 3/4" CW/HW LINES DOWN IN WALL. ROUTE 3/4" CW/HW LINE TO EACH SK. INSTALL WATER FILTER PER MANUFACTURERS REQUIREMENTS AND CONNECT TO BUBBLER PER ARCHITECTS DIRECTION.
- ROUTE 3/4" CW/HW LINES DOWN IN WALL. ROUTE 3/4" CW/HW LINES TO SK1 AND 1/2" CW LINE TO REF. INSTALL WATER FILTER PER MANUFACTURERS REQUIREMENTS.
- R/O SYSTEM SHALL BE INSTALLED PER MANUFACTURERS REQUIREMENTS AND PER OWNERS DIRECTION.
- 3/4" CW/HW LINES DOWN IN WALL. ROUTE 3/4" CW/HW LINES TO EACH WASHBOX.
- ROUTE 1/2" GAS LINE DOWN IN WALL. ROUTE 1/2" GAS LINE TO EACH DRYER.
- ROUTE 3/4" CW/HW LINES DOWN IN WALL. ROUTE 3/4" CW/HW LINES TO PREP SINK.
- ROUTE 1" GAS LINE DOWN IN WALL. ROUTE 1" GAS LINE TO GAS RANGE.
- ROUTE 1" CW/HW LINE DOWN IN WALL. ROUTE 3/4" CW/HW LINES TO HS, 3/4" CW/HW LINES TO 3-SK, AND 1/2" HW LINES TO EACH DW.
- ROUTE 1-1/2" CW AND 3/4" HW LINES DOWN IN WALL. ROUTE 1/2" CW/HW LINES TO EACH LAV, 3/4" CW LINE TO WC, 1-1/2" CW LINE TO UR AND 1/2" CW LINE TO DF.
- CLEAN-OUT SHALL BE INSTALLED EVERY HUNDRED FEET.
- 4" WASTE LINE, REFER TO CIVIL DRAWINGS FOR CONTINUATION.
- 2" WASTE LINE UP TO MEZZANINE TO SERVE FS.
- 2" HW LINE DOWN FROM MEZZANINE PLAN.
- 2" CW LINE UP TO MEZZANINE TO SERVE INSTANTANEOUS WATER HEATERS (WH).
- 3/4" HWR LINE UP TO MEZZANINE.
- 2" WASTE LINE UP TO SERVE FS.
- 2" CW LINE UP TO SERVE INSTANTANEOUS WATER HEATERS (WH).
- 2" HW LINE DOWN TO SERVE INSTANTANEOUS WATER HEATERS (WH).
- 3/4" HWR UP TO INSTANTANEOUS WATER HEATERS (WH).
- 1-1/4" GAS LINE UP TO INSTANTANEOUS WATER HEATERS (WH).
- 1-1/4" GAS LINE, EXTEND 1" GAS LINE TO EACH INSTANTANEOUS WATER HEATER (WH). REFER TO GAS SCHEMATIC ON DRAWING P2.3.
- 1-1/2" CW LINE STUB-OUT, PROVIDE SHUT-OFF VALVE AND CAP LINE AIR AND WATER TIGHT.



PLUMBING PLAN
1/8"=1'-0"

NO.	DESCRIPTION	DATE
1	FINAL SCHEME	02.01.19
2	REVISED SCHEME	02.07.19
3	PERMIT	05.24.19

Radian
ARCHITECTURE
127184
DAVID E. MCCARTHY
PROFESSIONAL ENGINEER
LICENSE NO. 127184
DATE SIGNED: 05/24/19

Project No. 1801.74
Date 02/11/19
Drawn by JG
Checked by NL
Sheet No. P1.1

TEXAS ENGINEER FIRM REGISTRATION #F-15201
ASEIENGINEERING
25329 Buddle rd. #402, Spring, TX 77380
aseiengineering.com © 713.300.9579
DFT: EB
DSN: DM
CHK: MG
JOB NO. 190000

THESE PLANS ARE THE PROPERTY OF RADIAN ARCHITECTURE AND MAY NOT BE COPIED OR REPRODUCED WITHOUT THE WRITTEN APPROVAL OF RADIAN ARCHITECTURE, 127184 SUIA, SUGAR LAND, TX 77478. PHONE: (713) 300-9579. THESE DRAWINGS AND ASSOCIATED DOCUMENTATION CONTAIN INFORMATION, DESIGN, CONCEPTS, AND DATA THAT ARE THE SOLE PROPERTY OF ASEI ENGINEERING, INC. THIS INFORMATION MAY NOT BE USED FOR ANY PURPOSE OTHER THAN ORIGINALLY INTENDED WITHOUT THE EXPRESSED WRITTEN CONSENT AND PERMISSION OF THE ENGINEER AND ASEI ENGINEERING, INC.

THE MONTESSORIOM AT BELLA TERRA
23421 FM 1093 RD.
RICHMOND, TX 77406