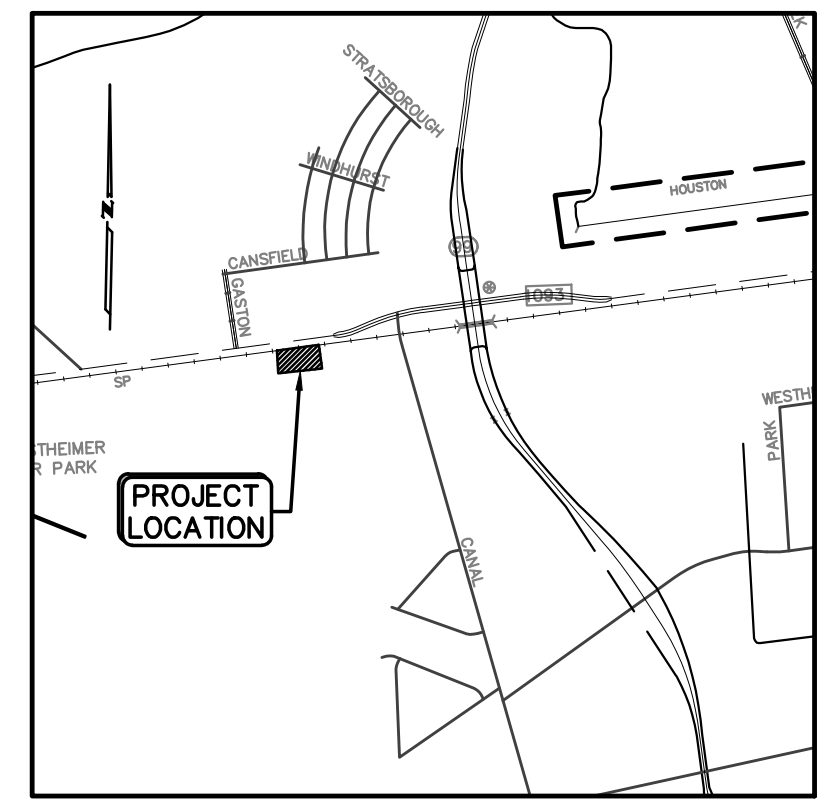


CURVE TABLE					
CURVE	LENGTH	RADIUS	DELTA	CHORD BEARING	CHORD DISTANCE
C1	75.70	90.00	48°11'23"	N17°07'33"E	73.48
C2	46.19	30.00	88°12'57"	N37°08'20"E	41.76
C3	190.02	6524.00	1°40'08"	N80°24'45"E	190.01

LINE TABLE		
LINE	LENGTH	BEARING
L1	35.08	N06°58'09"W

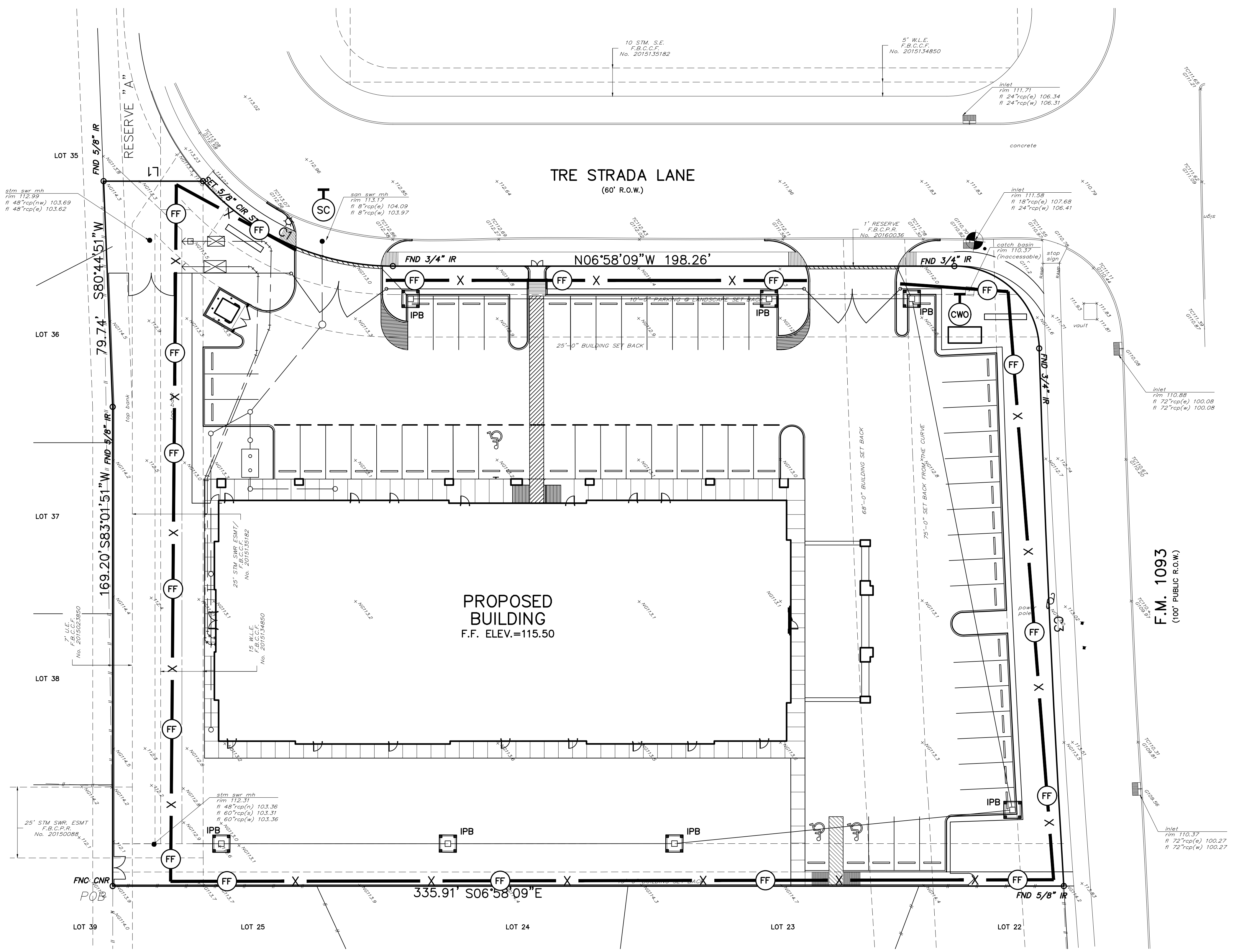
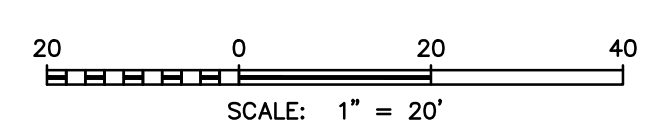
BENCHMARK ELEV. 112.26'
 FORT BEND COUNTY MARKER No. 302 A BRASS DISK IN CONCRETE ON INLET AT THE SOUTHWEST CORNER OF THE INTERSECTION OF KATY GASTON ROAD AND BELLAGIO DRIVE
 ELEV.=112.26 FEET NAVD 88, 2001 ADJUSTMENT
 ELEVATIONS SHOWN ARE 2001 ADJUSTMENT.

FLOOD STATEMENT
 PROPERTY LIES WITHIN FLOOD ZONE "X". ACCORDING TO F.I.R.M. MAP No. 48157C 0112, DATED 04/02/14, BY GRAPHING PLOTTING ONLY, WE DO NOT ASSUME RESPONSIBILITY FOR EXACT DETERMINATION. BEFORE ANY DEVELOPMENT PLANNING, DESIGN, OR CONSTRUCTION IS STARTED, THE COMMUNITY, CITY AND COUNTY IN WHICH SUBJECT TRACT EXISTS SHOULD BE CONTACTED. SAID ENTITIES MAY IMPOSE LARGER FLOOD PLAIN AND FLOODWAY AREAS THAN SHOWN BY F.I.R.M. MPAS THAT WILL AFFECT DEVELOPMENT.



VICINITY MAP
 SCALE: 1" = 1/2 MI.
 KEY MAP : 525E

- LEGEND**
- EXISTING**
- X 68.0 ELEVATION
 - X TC 68.10 TOP OF CURB
 - X G 67.75 GUTTER
 - rim 68.85 RIM
 - rim 65.30 FLOWLINE
 - MANHOLE
 - CLEAN OUT
 - POWNER POLE
 - DOWN GUY
 - FIRE HYDRANT
 - WATER VALVE
 - WATER METER
 - STREET SIGN
 - AREA LIGHT
 - TELEPHONE ENCLOSURE
 - GAS METER
 - CHAIN LINK FENCE
 - BARBED WIRE FENCE
 - WOOD FENCE
- PROPOSED**
- X FF X FILTER FABRIC FENCE
 - IPB INLET PROTECTION BARRIER STAGE I OR II AS APPLICABLE
 - SC STABILIZED CONSTRUCTION ACCESS
 - X RFB X REINFORCED FILTER FABRIC BARRIER
 - CWO CONCRETE WASH-OUT AREA



THE MONTESSORIOM AT BELLA TERRA
 23421 FM 1093 RD.
 RICHMOND, TX 77406

NO.	DESCRIPTION	DATE
1	FINAL SCHEME	02.01.19
2	REV FINAL SCHEME	02.07.19
3	CD REVIEW	04.15.19

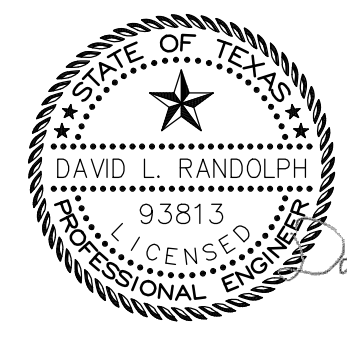
5800 WEST LOOP SOUTH, SUITE 200
 BELLAIR, TEXAS 77401
 TEL: 713.838.9000
 FAX: 713.838.9000
 www.lentz-engineering.com

STORM WATER POLLUTION PREVENTION PLAN

Project No.	1801.74
Date	
Drawn by	
Checked by	

Sheet No. C-8

FBC Engineering Approval



F:\Data\2019\18006 - Bella Terra Montessoriom\Drawings\Lenz\18006MASTER.dwg May 21, 2019 1:13:54 PM Rudy De Hopas

THIS DOCUMENT AND RELATED DETAILS REMAIN THE PROPERTY OF LENTZ ENGINEERING, LLC. THIS DOCUMENT IS NOT TO BE SOLD, COPIED, OR REPRODUCED WHOLE OR IN PART, WITHOUT THE CONSENT OF LENTZ ENGINEERING, LLC.

THESE PLANS ARE THE PROPERTY OF RADIAN ARCHITECTURE AND MAY NOT BE COPIED OR REPRODUCED WITHOUT THE WRITTEN APPROVAL OF RADIAN ARCHITECTURE, 18 ELDRIDGE RD., SUITE 100, BELLAIR, TX 77408. THESE PLANS ARE THE PROPERTY OF RADIAN ARCHITECTURE AND MAY NOT BE COPIED OR REPRODUCED WITHOUT THE WRITTEN APPROVAL OF RADIAN ARCHITECTURE, 18 ELDRIDGE RD., SUITE 100, BELLAIR, TX 77408.